

# Steel Adaptors for Platewheels

Steel Adaptors used in conjunction with standard Platewheels (pp 59-68) enable low cost production of steel Sprockets, with a tooth range 19 to 114 teeth. Three types are available; Threaded, Weld-on Hubs (available plain bore and taper bored), and Bolt-on Hubs.

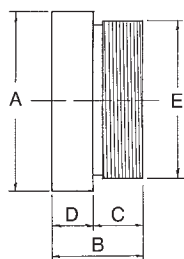
**Threaded Adaptors** were originally developed to convert cycle platewheels for industrial use. They enable quick, simple exchange of platewheels to adjust drives used in prototype and development applications. These adaptors are suitable for simplex platewheels for 3/8 inch to 3/4 inch pitch chains. They are also suitable for our Industrial Ratchet Freewheels, please refer to our "Freewheel Clutch" catalogue.

**Weld-on Hubs** are designed to enable conversion of Platewheels to solid Sprockets of a fully welded construction. They are available bored for taper bushes, or with pilot parallel bore which can be supplied finish bored and key seated.

**Bolt-on Hubs** are available in 11 sizes bored to suit 6 sizes of Taper Bush. They are manufactured in high grade cast iron with phosphate surface finish. These are ideal for connecting fan rotors, impellers, and conveyor pulleys to a shaft, and can also be used for converting platewheels to sprockets where change of ratios are required in the drive.



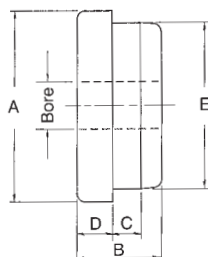
## Threaded Adaptors with Solid Bore



Hubs can be supplied bored, keywayed and setscrewed to customers requirements. Some sizes platewheels for 081 and 08B-1 chain stocked with threaded bore for A211 adaptor.

| Hub Ref. | Max. Bore | A max | B  | C    | D    | E<br>R.H. Thread C.E.I. Form<br>24T.P.I. | Weight Kg |
|----------|-----------|-------|----|------|------|--|-----------|
| A211     | 20        | 42    | 27 | 14.3 | 12.7 | 1.37 inches                              | 0.23      |
| A212     | 24        | 48    | 27 | 14.3 | 12.7 | 1.625 inches                             | 0.32      |
| A213     | 30        | 58    | 27 | 14.3 | 12.7 | 2.00 inches                              | 0.48      |

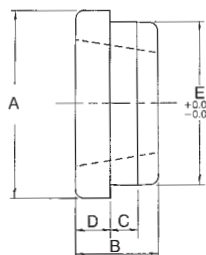
## Steel Weld-on Hubs with Pilot Bore



Hubs can be supplied bored and keywayed to customers requirements.

| Hub Ref. | Pilot Bore | Max Bore | A   | B  | C  | D  | E                | Weight Kg |
|----------|------------|----------|-----|----|----|----|------------------|-----------|
| A214     | 20         | 40       | 70  | 38 | 11 | 16 | 60.00<br>59.95   | 0.89      |
| A215     | 20         | 45       | 80  | 38 | 11 | 16 | 70.00<br>69.95   | 1.25      |
| A216     | 25         | 55       | 95  | 44 | 13 | 19 | 85.00<br>84.95   | 2.10      |
| A217     | 25         | 70       | 120 | 44 | 13 | 19 | 110.00<br>109.95 | 3.51      |
| A218     | 25         | 85       | 145 | 51 | 16 | 19 | 130.00<br>129.95 | 5.78      |

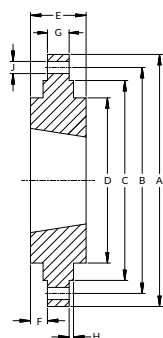
## Steel Weld-on Hubs with Taper Bore



Hubs are taper bored, drilled, and tapped to suit standard Taper Bore Bushes (see pp 34/35). Earlier 'M' series Hubs are available to order on short delivery. M25 & M30 have been superseded by H25 & H30.

| Hub Ref. | Bush Size | Max Bore | A   | B   | C  | D  | E   | Weight Kg |
|----------|-----------|----------|-----|-----|----|----|-----|-----------|
| H12      | 1210      | 32       | 70  | 25  | 10 | 9  | 65  | 0.25      |
| H16      | 1610      | 42       | 80  | 25  | 10 | 9  | 75  | 0.41      |
| H20      | 2012      | 50       | 95  | 32  | 12 | 12 | 90  | 0.75      |
| H25      | 2517      | 60       | 115 | 45  | 15 | 19 | 110 | 1.48      |
| H30      | 3020      | 75       | 145 | 51  | 15 | 19 | 140 | 2.73      |
| W30      | 3030      | 75       | 145 | 76  | 15 | 19 | 140 | 4.05      |
| H35      | 3525      | 90       | 190 | 65  | 25 | 25 | 180 | 4.70      |
| W35      | 3535      | 90       | 190 | 89  | 25 | 25 | 180 | 6.40      |
| H40      | 4040      | 100      | 200 | 102 | 30 | 32 | 190 | 13.80     |

## Steel Bolt-on Hubs with Taper Bore



| Hub Ref. | Bush Size | A   | B   | C*  | D   | E  | F     | G    | H   | J         | Weight Kg |
|----------|-----------|-----|-----|-----|-----|----|-------|------|-----|-----------|-----------|
| BF12     | 1210      | 120 | 100 | 80  | 70  | 25 | 9.00  | 7.5  | 2.5 | 6 X 7.50  | 0.82      |
| BF12A    | 1210      | 180 | 135 | 90  | 75  | 25 | 9.25  | 6.5  | 2.5 | 6 X 7.50  | 1.55      |
| BF16     | 1610      | 130 | 110 | 90  | 80  | 25 | 9.00  | 7.5  | 2.5 | 6 X 7.50  | 0.94      |
| BF16A    | 1615      | 200 | 150 | 110 | 85  | 38 | 15.30 | 7.5  | 2.5 | 6 X 7.50  | 2.44      |
| BF20     | 2012      | 145 | 125 | 115 | 95  | 32 | 12.00 | 9.5  | 2.5 | 6 X 9.50  | 1.52      |
| BF20A    | 2012      | 270 | 190 | 140 | 110 | 32 | 11.80 | 8.5  | 2.5 | 6 X 9.50  | 4.51      |
| BF25     | 2517      | 185 | 155 | 130 | 115 | 45 | 19.00 | 12.5 | 2.5 | 6 X 11.50 | 3.12      |
| BF25A    | 2517      | 340 | 240 | 170 | 125 | 45 | 17.80 | 9.5  | 2.5 | 8 X 11.50 | 7.99      |
| BF30     | 3020      | 220 | 190 | 165 | 145 | 51 | 19.00 | 12.5 | 2.5 | 6 X 13.50 | 4.90      |
| BF30A    | 3020      | 430 | 300 | 220 | 160 | 51 | 18.80 | 13.5 | 2.5 | 8 X 13.50 | 17.13     |
| BF30B    | 3020      | 485 | 340 | 250 | 160 | 51 | 18.80 | 13.5 | 2.5 | 8 X 13.50 | 23.05     |

This series of Hubs are mainly used in the construction of fans, providing convenient shaft connection. Hubs are taper bored, drilled, and tapped to suit standard Taper Bore Bushes (see PP 34/35).

All hubs except BF30B are produced in high grade cast iron. BF30B hubs produced in mild steel.

\* Diameter C is machined to tolerance of +0.0/-0.05mm to enable accurate location.

All dimensions on this page are in mm unless indicated otherwise.